

STG 202 V7 T GAS

Gastronomy oven




Ref. 710573



- Change door opening: **optional**

EQUIPMENT

- Digital display in control panel system
- End of cycle alarm
- Door switch
- Interior LED light
- 3/4" water connection
- Easy to clean folding glass
- Rotation inverter
- USB connection
- Multilevel
- Premix burner system 

FUNCTIONS

- Clima control-humidity regulation
- % step speed control
- Steam control-programmable chimney
- 99 cooking programs
- Connection core/vacuum/multipoint probe
- 3 cooking modes: dry heat, vapour and mixed
- Regeneration/maintain food temperature
- User configurable cooking book with pictures
- Multicook/All on time
- Preheating/cooling

TECHNICAL CHARACTERISTICS

Electric/GAS power 1.300 W / 50 kW 43000 kcal/h

Maximum temperature 270 °C

Weight 310 kg

Voltage 230 V-50/60 Hz

Connection Single phase (schuko)

Internal dimensions (W)700x(D)815x(H)1480 mm

External dimensions (W)880x(D)1360x(H)1865 mm

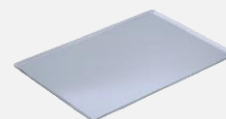
Automatic washing standard

Removable core probe standard

Trolley standard

CAPACITY

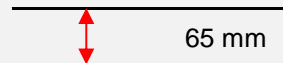
20 trays GN1/1



Transverse tray position



Distance between trays



STG 202 V7 T GAS

Specific accessories



First installation kit

Ref. 710434



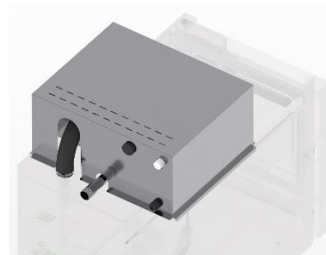
The kit contains:

Pipes, connections, adapters and required accessories for the oven installation

- 1 kg of detergent
- 1 kg of rinse aid

Fumes condenser kit

Ref. (ASK DEALER) | PVP (ASK DEALER)



STG 202 V7 T GAS



DECLARACIÓN UE DE CONFORMIDAD EU DECLARATION OF CONFORMITY

Directiva(s) del Consejo con la(s) que se declara conformidad:
Council Directive(s) to which conformity is declared:

DC 2014/35/EU + DC 2014/30/EU + DC 2011/65/EU + Regulation (EU) 2016/426

Aplicación de las Normas:
Application of the Standards:

UNE-EN 60335-1:2012+AC:2014+A11:2014+A13:2017+A14:2014+A2:2020+A1:2020; UNE-EN 60335-2-42:2004+Corr:2007+A1:2008+A11:2012; UNE-EN 55014-1:2017+A11:2021; UNE-EN 55014-2:2015; UNE-EN 61000-3-2:2014; UNE-EN 61000-3-3:2013+A1:2020; UNE-EN 203-1: 2014; UNE-EN 203-2-2:2007; UNE-EN 60335-2-102:2016

Fabricante / *Manufacturer's name:*

**FM CALEFACCIÓN S.L.
CIF: B-14343594**

Dirección / *Manufacturer's address:*

**CTRA. de Rute km.2.700, C.P.:14900, Lucena
Cordoba, Spain**

Tipo de aparato / *Type of device:*

HORNO / OVEN

Marca / *Trade.:*

FM CALEFACCIÓN

Modelo / *Model no.:*

STG 202 V7 T GAS N/S: 21XXXXXXXXXX PIN:370DM5880

Nosotros, los abajo firmantes, declaramos bajo nuestra exclusiva responsabilidad que el equipo especificado cumple con la(s) Directiva(s) y Norma(s) mencionadas

We, the undersigned, hereby declare under our sole responsibility that the specified equipment is in conformity with the above Directive(s) and Standard(s)

Lugar / *Place:* **Lucena**

Firma / *Signature:* **B-14343594**

Fecha / *Date:* **01/01/2021**



STG 202 V7 T GAS



TECHNICAL CHARACTERISTICS				CONNECTIONS	
Empty unit weight				1	Hose connection
Unit+packaging weight				2	Water connection
Supply voltage	230 Vac - single phase			3	Drain Ø40 mm
Frequency	50/60 Hz			4	Gas Connection (3/4")
Power cable	Hose 1F+N+T 2,5 mm ² (schuko)			5	Fumes exit Ø50 mm
Sound pressure level	Below 70dB			6	Safety gap ≥ 120 mm
Electric power	1300 W			7	Exhaust pipe Ø50 mm
	G20	G25	G31	8	On/Off button
Estimated consumption (m3/h)	5,93	6,89	4,35	9	Core Probe Connection
Input pressure (mbar)	20	25	37	10	USB/HACCP Connection
Nominal thermal power (kW)	56	56	56	11	Fumes condenser connection
				12	Safety thermostat reset
				13	Nameplate

*Dimensions in mm

*Flue gas outlet adapter ø200mm included

